

Historic, archived document

Do not assume content reflects current scientific knowledge, policies, or practices.

WYATT - QUARLES SEED COMPANY

P.O. BOX 2131

331 S. WILMINGTON STREET

RALEIGH, N.C.

[1968]

The number in front of each type of bulb refers to the bloomingtime of that type of bulb or variety:

1 = March Blooming 2 = March-April Blooming
3 = April-May Blooming 4 = May Blooming

3 - April-May
National Agricultural

For the prices of the items featured in this magazine, kindly check the back page of this list. Prices quoted include postage.

RECEIVED

★ SEP 24 1968 ★

U. S. Department of Agriculture

(4) Giant Long Stemmed Darwin - Cottage - Breeder Tulips

For distinctive beauty and attractiveness Cottage-Breeder and Darwin Tulips are unsurpassed. Adapted to many useful purposes with their brilliant colors, their large flowers borne on tall graceful stems, their excellent substance and longlasting qualities, they create a beautiful picture in any garden.

Letter in back of each variety denotes class of tulip: (C) Cottage; (Br) Breeder; (D) Darwin.

GROUP I ECONOMICAL OLD FAVOURITES

12 for \$ 1.25 25 for \$ 2.25 100 for \$ 8.00

BALALAIKA, (D) Very large, well formed glowing turkish-red flower. Highly recommended.

CLARA BUTT, (D) Splendid bedder. Beautiful soft salmon-rose flowers borne on tall stems.

ETOILE DU MIDI, (D) Orange with golden edge.

GOLDEN HARVEST, (C) Large flowers of soft yellow with ivory stamens and of great substance.

KOBLENZ, (D) Deep wine-red.

MAGIER, (C) Milky-white with a margin of violet-blue, which spreads over the whole flower as it ages.

PRINCESS MARGARET ROSE, (C) Clear canary-yellow, edged orange-red.

QUEEN OF NIGHT, (D) Deep blackish maroon. Large flower on strong stem.

SPRING SONG, (D) Bright red with small white base. Excellent bedding tulip.

WHITE LEADER, (D) A remarkable white tulip with white base and anthers and perfectly shaped.

MIXTURE OF ALL COLORS OF THE RAINBOW

Especially attractive where bright showy colors are desired.

12 for \$ 1.05

25 for \$ 1.85

50 for \$ 3.65

100 for \$ 6.95

GROUP II OUR CHOICE OF THE FINE NEWER VARIETIES

12 for \$ 1.40 25 for \$ 2.70 100 for \$ 9.75

CORDELL HULL, (D) Carmine-red with stripes and blotches.

CUM LAUDE, (D) Deep campanula violet.

FLORENCE NIGHTINGALE, (D) Very bright vermilion-red, with glistening sheen. The flower is broad and substantial.

GOLDEN NIPHETOS, (D) Gleaming gold with soft yellow center. Large oblong flower with lasting qualities.

GREENLAND, (C) Deep old rose with a board green central band. Most attractive new color combination.

HALCRO, (C) Large long shaped flower of carmine-red. Excellent.

HELEN MADISON, (D) Beautiful rose pink inside claret, white base. The flower is carried on a strong stem.

INSURPASSABLE, (D) Lilac flower on a strong stem.

MAUREEN, (C) Marble white, oval shaped flower. Large and substantial.

MRS. JOHN T. SCHEEPERS, (C) Clear yellow. The enormous oval shaped flower is carried on a strong stem. A perfect garden tulip.

PINK SUPREME, (D) Bright pink, somewhat lighter to the edges.

PRINCESS ELIZABETH, (D) Vivid rosy-pink. An excellent variety for the garden.

SCARLETT O'HARA, (D) A brilliant scarlet flower with a lighter shade to the edge.

SMILING QUEEN, (D) This variety appears to be the finest rose colored tulip. The color is pure and radiant.

SNOWPEAK, (D) Very large pure white flower of excellent shape on a tall stiff stem.

(3) DARWIN "HYBRID" TULIPS

12 for \$ 1.40 25 for \$ 2.70 100 for \$ 9.75

These outstanding new tulips are the result of a great many years of crossing and selecting between the best Darwins and Fosteriana Red Emperor tulips. They are tall and the most perfect, the largest and strongest of all, truly wonderful. A small grouping in the garden will be the talk of the neighbourhood.

DIPLOMATE. The most brilliant vermilion-scarlet red ever seen. The large, egg-shaped flowers are carried on sturdy stems.

GENERAL EISENHOWER. An exceptionally large flower, orange-red in color.

GUDOSHNIK. Sulphur-yellow, spotted salmon-red. An exquisite flower.

JEWEL OF SPRING. Beautiful sulphur-yellow, with a very slight trace of red on the edges of the petals. A tulip of an exceptionally large size, perfect form and long lasting qualities.

12 for \$ 1.75 25 for \$ 3.35 100 for \$ 12.50

EXTRA EARLY SPECIES OR BOTANICAL TULIPS

12 for \$ 1.75 25 for \$ 3.35 100 for \$ 12.50

Quite different in habit and uses from all other tulips, they are becoming increasingly popular. They are wonderful for grouping in rockgardens and hardy borders, where they come up year after year.

(2) FOSTERIANA GOLDEN EAGLE. 18". Deep golden yellow, exterior apricot.

(2) FOSTERIANA RED EMPEROR. 18". The great and famous tulip. Bright vermilion-scarlet flower of remarkable size. This is a must.

(2) FOSTERIANA WHITE EMPEROR. 18". Its white color shows a touch of very light primrose on the outside petals. It blooms early like the Red Emperor.

(3) GREIGII RED RIDING HOOD. 6". Oriental-red, brownish-purple spreading leaves. The whole plant is as charming as the little girl in the fairy tale.

(1) KAUFMANNIANA CEASAR FRANCK. 8". Bright crimson-scarlet, edged rich yellow. The earliest tulip.

(1) KAUFMANNIANA HEART'S DELIGHT. 8". Carmine-red, edged pale rose. Inside soft rose, base yellow with red blotches. Leaves mottled.

(1) KAUFMANNIANA JOHANN STRAUSS. 4". White, base golden yellow; exterior currant-red, edged sulphur.

(3) TULIPA TARDA. 5". Canary-yellow and white, blooming with several flowers on a stem. Excellent for the rock-garden.

(4) AMAZING BUNCH FLOWERING TULIPS

12 for \$ 2.15 25 for \$ 3.90 100 for \$ 14.25

This type of tulips produces three and more flowers on each stem. Very unusual and handsome.

GEORGETTE. Fine novelty of clear yellow, edged red. Very outstanding.

ORANGE BOUQUET. Clear scarlet, gracefully branching.

(4) GRACIOUS LILY FLOWERING TULIPS

12 for \$ 1.50 25 for \$ 2.75 100 for \$ 9.75

Elegantly shaped flowers with long pointed and reflexed petals on tall stems. Splendid for groups in borders and very artistic when cut.

CHINA PINK. A very fine china-doll-pink flower with white base.

GOLDEN DUCHESS. Golden yellow, large flower of great beauty.

QUEEN OF SHEBA. Glowing rusty-red with golden margin. Unusual color combination for this group.

RED SHINE. A very large graceful shaped deep red flower on a strong stem.

WHITE TRIUMPHATOR. Beautiful tulip of artistic form, the color is snow-white throughout.

(4) PARROT TULIPS

12 for \$ 1.50 25 for \$ 2.75 100 for \$ 9.75

Extravagant-looking Tulips with toothed feathered and fringed blooms. In bright sunshine they open flat to a fantastic size. They are wonderful cutflowers.

BLUE PARROT. Delightful lilac-blue, very substantial flower on an erect stem.

RED PARROT. Raspberry-red with a faint blue tone.

TEXAS GOLD. Clear yellow, slightly rimmed bright red.

VAN DYK. Bright rose-pink, large flower, outstanding in color and form.

WHITE PARROT. Pure white, distinctly marked green.

(3) PEONY TULIPS

12 for \$ 1.50 25 for \$ 2.75 100 for \$ 9.75

Fully double flowers of huge size, on strong erect stems, resembling Peonies in form.

BRILLIANT FIRE. Bright vermilion-red. Excellent.

EROS. Very large flower of clear old rose. This sweet scented tulip is a fine garden variety.

MOUNT TACOMA. The large flower is very much resembling a double white peony.

NIZZA. Soft yellow, strongly flaked with bright red.

(3) INTERMEDIATE TRIUMPH — MENDEL — SINGLE EARLY TULIPS

12 for \$ 1.50 25 for \$ 2.75 100 for \$ 9.75

They are useful for the garden, due to their strong stems and because they fill the gap between the very early and the late tulips. They are also excellent for indoor growing.

ALLROUND. Glowing scarlet, excellent for pots.

BLIZZARD. Large, substantial, pure white flower of perfect shape. This is indeed an excellent tulip we highly recommend.

BORDER BEAUTY. White with a broad border of pink.

PRINCE CARNIVAL. Orange-red with yellow stripes and blotches, sweet scented.

SULPHUR GLORY. One-toned chrome-yellow, strong stem.

Narcissi and Daffodils

The flowering season of narcissi begins extremely early and lasts until quite late. As cutflowers they have few equals. Culture is the easiest possible. Narcissi multiply quite freely and bloom profusely year after year.

(2) DAFFODILS — TRUMPET NARCISSI

12 for \$ 2.60 25 for \$ 4.75 100 for \$ 16.95

BEERSHEBA. The pure white perianth and trumpet are well-proportioned, and elegant flower.

GOLDEN HARVEST. Large yellow. Blooms early. Very showy.

KING ALFRED. The most popular daffodil on earth. Its golden yellow color and bold trumpet have made it a universal favourite.

MOUNT HOOD. Ivory-white perianth with large creamy-white trumpet, heavily flanged and imbricated at the mouth.

PINK HORIZON. Pure white well-formed perianth, the trumpet shaped cup is of a delicate lilac-rose.

PRESIDENT LEBRUN. Deep yellow trumpet with pure white perianth. Excellent.

UNSURPASSABLE. Definitely a show flower, extremely large, golden-yellow throughout.

(2) LARGE CUPPED NARCISSI

12 for \$ 2.60 25 for \$ 4.75 100 for \$ 16.95

CARLTON. Broad overlapping flat perianth with a large expanded cup. The whole flower is of a uniform yellow. Very free flowering and a rapid grower.

DELIBES. Bright yellow perianth with a large deep orange-red cup.

DUKE OF WINDSOR. Thick pure white segments with a broad flat cup, beautifully ruffled, orange-red.

ICE FOLLIES. Pure white perianth, the apricot-yellow cup measures almost the length of the perianth and is very flat and open.

SPRING BRIDE. Star shaped ivory-white perianth with a clear frilled crown.

(3) SMALL CUPPED NARCISSI

12 for \$ 2.00 25 for \$ 3.65 100 for \$ 12.95

ACTAEA. Broad snow-white perianth of solid texture, petals well-overlapped, canary-yellow cup, red edged. Excellent for naturalizing.

POMONA. Pure white perianth, sulphur-yellow cup with red margin and green center.

(2) DOUBLE NARCISSI

12 for \$ 2.60 25 for \$ 4.75 100 for \$ 16.95

GOLDEN DUCAT. Full double, pure yellow flower.

MARY COPELAND. Outer petals are creamy-white and the center interspersed with orange-red. Strong stem.

SPECIE — ROCKGARDEN NARCISSI

(2) BULBOCODIUM. The Hoop Petticoat Daffodil. Unusual flowers having rich golden yellow trumpets of Hoop Petticoat form and rush like foliage
12 for \$ 1.10 25 for \$ 1.80 100 for \$ 6.75

(1) FEBRUARY GOLD. A golden yellow miniature trumpet with reflexing petals.
12 for \$ 2.25 25 for \$ 3.95 100 for \$ 14.95

(4) JONQUIL SIMPLEX. The true single sweet Jonquil. Dainty heads of small rich yellow fragrant flowers. Rush like foliage.
12 for \$.95 25 for \$ 1.85 100 for \$ 6.95

(1) PEEPING TOM. Very long deep golden yellow trumpet and reflexed petals of the name color. A Cyclamineus.
12 for \$ 2.60 25 for \$ 4.75

(3) TRIANDRUS LIBERTY BELLS. Cluster flowering, pendant deep lemon-yellow flowers with all the excellent qualities of the Triandrus Hybrids.
12 for \$ 1.85 25 for \$ 3.40 100 for \$ 12.15

(3) TRIANDRUS THALIA. Three to four pure white flowers on one stem, highly recommended.
12 for \$ 1.85 25 for \$ 3.35 100 for \$ 11.95

(3) TRIANDRUS TRESAMBLE. The strong stem of this variety carries four
12 for \$ 2.15 25 for \$ 3.90

(3) POETAZ NARCISSI

12 for \$ 1.85 25 for \$ 3.35 100 for \$ 11.95

CHEERFULNESS. A very showy and decorative variety with two or three blooms on a strong stem, white perianth and a full double creamy-white center.

GERANIUM. Excellent, perianth pure white and a flat cup of an intense orange-scarlet. There are four or more flowers on a strong stem.

YELLOW CHEERFULNESS. Yellow sport of the regular Cheerfulness with all its good qualities.

NARCISSI FOR INDOOR CULTURE

Imported from France.

12 for \$ 2.15 25 for \$ 3.90 100 for \$ 14.25

PAPERWHITE NARCISSI. The best known and loved and easiest to grow of all bulbous flowers for indoor culture. A cluster of white flowers on each stem.

GRAND SOLEIL D'OR. The same as the Paperwhites, except the perianth is golden yellow and the tiny cup of an orange-yellow.

Naturalizing Narcissi and Daffodil Mixture

This mixture is made by our Dutch grower. It includes a wide range of varieties in varied sizes, shapes, types and colors, all especially adapted for planting in woodlands and places where mass flowering is desired.

12 for \$ 1.60 25 for \$ 2.95 50 for \$ 5.70 100 for \$ 10.75

(2) HYACINTHS

For fragrance and beauty. (The queen of the spring flowers)

Exhibition size (18/19 cm)

12 for \$ 3.20 25 for \$ 5.80 100 for \$ 20.70

Extra bedding size (15/16 cm)

12 for \$ 1.95 25 for \$ 3.65 100 for \$ 12.95

Hyacinths never fail to catch the admiration and affection of flower lovers. With their wide range of colors, their earliness, uniformity in height and fragrance, hyacinths will fill your expectations of spring for many years to come.

CARNEGIE. Large compact spike, pure white.

CITY OF HAARLEM. Pale yellow, large spike.

CROWNPRINCESS MARGARETHA. Even shade of soft pink.

DELFT BLUE. Deep porcelain blue, large spike, perfect form.

JAN BOS. Carmine-red, tinted scarlet, lighter center. Early.
PERLE BRILLIANT. Fine light blue, large broad spike.
PINK PEARL. Pink, very early, excellent forcer.

(4) FANCY DUTCH IRIS

12 for \$.90 25 for \$ 1.65 100 for \$ 5.95

Once established, these Irises increase rapidly. Practically unsurpassed as cutflowers, lasting for a long time. Also called "A poor man's orchid".

ANGEL's WINGS. White, deep yellow falls, orange blotch.

BLUE CHAMPION. Porcelain blue, yellow blotch.

GOLDEN HARVEST. Yellow.

KING MAUVE. Violet-mauve, with clear mauve blotch.

LE MOGOL. Mahogany-bronze, yellow blotch.

PROFESSOR BLAAUW. Deep velvety blue, large flowers.

SUNSHINE. Bright-yellow, with orange falls.

WEDGWOOD. Light blue, earliest for forcing.

WHITE EXCELSIOR. Pure white.

(4) MIXTURE OF DUTCH IRIS

12 for \$.70 25 for \$ 1.25 100 for \$ 4.50

(1) CROCUS

12 for \$.70 25 for \$ 1.35 100 for \$ 4.75

The most cheerful spring flower for beds, borders and in lawns or woodlands.

EARLY PERFECTION. Amethyst-violet.

LITTLE DORRIT. Amethyst-blue with silvery sheen, one of our finest crocus.

PETER PAN. Pure white, orange stigmata.

PICKWICK. Silvery-lilac with dark lilac stripes. A distinct combination of colors.

YELLOW MAMMOUTH. Golden yellow.

CROCUS MIXTURE, of all above mentioned colors.

12 for \$.60 25 for \$ 1.25 100 for \$ 4.25

PEONIES

Healthy, vigorous, northern-grown, 3 to 5-eye divisions, individually wrapped and labeled, with cultural directions.

SARAH BERNARDT. Dark pure pink, edged a trifle lighter; very large. Midseason to late.

FESTIVA MAXIMA. Pure white flecked with carmine; enormous, full double flower. Early.

FELIX CROUSSE. A fine all-round red for cut flowers. Available in quantity. Rich ruby-red.

PRIMEVERE. The nearest to yellow. Anemone type; large canary-yellow center, blush-white outer petals. Early midseason.

Each \$ 1.00 3 for \$ 2.85 6 for \$ 5.40 12 for \$ 10.20
 postpaid

The pretty little things

Plant little groups of these all over the garden. They are quite hardy and will come back year after year.

	Per 12	25	100
(3) ANEMONE LORD LIEUTENANT. Semi-double, violet blue70	1.10	3.95
(3) ANEMONE MOUNT EVEREST. Semi-double, white70	1.10	3.95
(3) ANEMONE THE ADMIRAL. Semi-double, rose-violet70	1.10	3.95
(3) ANEMONE THE GOVERNOR. Semi-double, brilliant-red70	1.10	3.95
(3) ANEMONE ST. BRIGID. Double flowers, mixture of all colors70	1.10	3.95
(3) ANEMONE DE CAEN SINGLE. A mixture of all colors70	1.10	3.95
(3) ANEMONE BLANDA. Mixed colors, very early75	1.40	5.10
(1) CHIONODOXA LUCILIAE. (Glory of the Snow) 5". Sky-blue with a white center. Very early. Once established, they become increasingly beautiful for years45	.80	2.85
(1) ERANTHIS (Winter Aconite) 3". Golden yellow, very early, very free flowering.60	1.10	3.95
(3) FRITILLARIA MELEAGRIS (Guinea Hen Flower) 12". Reddish brown, and purple bellshaped flowers. Checkered and interesting60	1.10	3.95
(1) GALANTHUS (Snowdrops) 4". Lovely white, nodding blooms. The earliest of the spring heralds; their persistency is noteworthy and they will thrive anywhere60	1.10	3.95
(1) IRIS SPECIE DANFORDIAE. Bright yellow, 6"80	1.50	5.40
(1) IRIS SPECIE RETICULATA 6". Violet-blue, sweet scented80	1.50	5.40
(4) IXIA MIXTURE. These little bulbs are mostly used for cutflowers, 18". A wide array of colors. They prefer sunny areas30	.55	1.95
(3) LEUCOJUM AESTIVUM (Snowflake). Produces clusters of white bell-shaped flowers with green tips. They prefer a shaded location80	1.45	5.25
(2) MUSCARI HEAVENLY BLUE (Grape Hyacinths) 5". Charming spikes of clear blue flowers60	1.10	3.95
(2) MUSCARI ALBA (White Grape Hyacinths) 5". Somewhat smaller than the blue one but just as attractive60	1.10	3.95
(2) PUSCHKINIA LIBANOTICA (Striped Squill) 6". Lavender-blue60	1.10	3.95

Per 12 25 100

- (4) **RANUNCULUS**, Peony Flowering Mixture. The only type that is really suitable for the garden. Excellent brilliant color mixture of large well-filled double flowers80 1.45 5.25
- (4) **SCILLA CAMPANULATA 15"** (Wood Hyacinths or Blue Bells). In white, pink or blue and mixed. Very long lasting and exceptionally suitable for naturalizing and will thrive anywhere. .65 1.20 4.35
- (3) **SCILLA SIBERICA SPRING BEAUTY 5"** (Siberian Squill). Producing fragrant drooping bell-like flowers. Delphinium blue, very attractive. They prefer a sunny location75 1.40 5.10

Lilies

stately - exotic - beautiful - fragrant

REGALE. The well-known Regale Lily. This is one of the most beautiful and one of the hardiest lilies in cultivation. Flowers are flushed with yellow at center shading to white at the outer edges, on the outside they are marked with reddish shadings on the ribs. Grows from 4 to 6 feet tall.

3 for \$ 2.50 12 for \$ 9.00 25 for \$ 16.95

LILIUM CANDIDUM (Madonna Lily). These emblems of heavenly purity are among the best known and most popular of all garden Lilies. Hardy and one of the easiest in culture, enduring sun and shade. Pure white flowers borne 8 to 12 on a 3 to 4 feet stem, are delightfully fragrant. Bloom in June.

3 for \$ 1.45 12 for \$ 4.95 25 for \$ 9.50

Amaryllis

Dutch Hybrids for indoor growing; available in red, pure white and pink. If ordered immediately you could have them in bloom by Christmas. Special planting instructions come with each bulb. The 3 to 5 lily-like flowers are huge and of a striking color produced on a heavy stem.

Per bulb \$ 2.50 3 for \$ 6.75

Fall blooming bulbs

COLCHICUM AUTUMNALE MAJOR, lilac-blue.

Per bulb \$.40 3 for \$ 1.10

CROCUS MEDIUS, uniform lilac.

12 for \$ 1.50 25 for \$ 2.75 100 for \$ 9.75

STERNBERGIA LUTEA. Pure yellow.

12 for \$ 1.50 25 for \$ 2.75 100 for \$ 9.75

French Roman Hyacinths

These small Hyacinths differ from the large spike varieties in that they produce numerous spikes of scattered flowers. Their delightful fragrance and graceful habit makes them ideal for gardens, for indoor culture in pots or bulb fiber and for cutting. The white is especially fine for indoor use.

Pink	per 12 \$ 3.00	per 25 \$ 5.30	per 100 \$ 19.65
White	per 12 \$ 3.00	per 25 \$ 5.30	per 100 \$ 19.65
Blue	per 12 \$ 3.00	per 25 \$ 5.30	per 100 \$ 19.65

(2) Fritillaria Imperialis "Crown Imperial"

This large bulb produces thick clusters of orange flowers, suspended under a tuft of green leaves on stout stems standing three feet high. Planted in a group of 3 or 5 will give you a very impressive and attractive spot in your garden.

1 for \$ 1.10 3 for \$ 3.00 12 for \$ 10.80

Varieties featured in this magazine

	Per 12	Price per 25	100
Frontpage			
Botanical Tulip RED EMPEROR , bright vermilion-scarlet	\$ 1.75	\$ 3.35	\$ 12.50
Daffodil KING ALFRED , golden yellow	2.60	4.75	16.95
Hyacinth DELFT BLUE , deep porcelain-blue	3.20	5.80	20.70
Picture No.			
2 Darwin T. BALALAIKA , glowing turkish-red	1.25	2.25	8.00
3 Cottage T. HALCRO , carmine-red	1.40	2.70	9.75
4 Darwin T. SMILING QUEEN , pure rose	1.40	2.70	9.75
5 Darwin T. ETOILE DU MIDI , orange with golden edge	1.25	2.25	8.00
6 Darwin T. GOLDEN NIPHETOS , gleaming gold	1.40	2.70	9.75
7 Darwin T. SNOWPEAK , very large pure white flower	1.40	2.70	9.75
8 Single Early T. PRINCE CARNIVAL , orange-red with yellow stripes and blotches	1.50	2.75	9.75

Picture No.	Price per				Price per		
	12	25	100		12	25	100
8 Darwin T. SCARLETT O'HARA , brilliant scarlet	\$ 1.40	\$ 2.70	" 9.75	30 Hyacinth CROWNPRINCESS MARGARETHA , soft pink	\$ 3.20	\$ 5.80	\$ 20.70
Triumph T. BORDER BEAUTY , white with a broad border of pink	1.50	2.75	9.75	31 Hyacinth JAN BOS , carmine-red	3.20	5.80	20.70
9 Darwin T. CUM LAUDE , deep campanula violet	1.40	2.70	9.75	Hyacinth CITY OF HAARLEM , pale yellow	3.20	5.80	20.70
Cottage T. MAUREEN , marble white ...	1.40	2.70	9.75	Hyacinth CARNEGIE , pure white	3.20	5.80	20.70
10 Lily Flowering T. WHITE TRIUMPHATOR , snow-white	1.50	2.75	9.75	Hyacinth DELFT BLUE , porcelain-blue	3.20	5.80	20.70
11 Bouquet Flow. T. ORANGE BOUQUET , clear scarlet	2.15	3.90	14.25	Hyacinth PINK PEARL , pink	3.20	5.80	20.70
12 Darwin Hybrid T. GENERAL EISENHOWER , orange-red	1.40	2.70	9.75	32 Crocus YELLOW MAMMOUTH , golden yellow70	1.35	4.75
13 Darwin Hybrid T. GUDOSHNIK , sulphur-yellow, spotted salmon-red	1.40	2.70	9.75	Crocus EARLY PERFECTION , amethyst-violet70	1.35	4.75
14 Peony Flow. T. BRILLIANT FIRE , bright vermilion-red	1.50	2.75	9.75	Crocus PETER PAN , pure white70	1.35	4.75
15 Parrot T. BLUE PARROT , lilac-blue ...	1.50	2.75	9.75	Crocus PICKWICK , silvery-lilac with dark lilac stripes70	1.35	4.75
ORANGE PARROT , bronzy orange ...	1.50	2.75	9.75	33 Hybrid AMARYLLIS RED , 3 to 5 lily like flowers	\$ 2.50 each	3 for \$ 6.75	
Parrot T. RED PARROT , raspberry-red ...	1.50	2.75	9.75	34 GALANTHUS (Snowdrops), lovely white nodding blooms60	1.10	3.95
Parrot T. VAN DYK , bright rose-pink ...	1.50	2.75	9.75	35 ANEMONE DE CAEN Mixture, a mixture of all colors70	1.10	3.95
Parrot T. TEXAS GOLD , clear yellow, slightly rimmed bright red	1.50	2.75	9.75	36 ANEMONE ST. BRIGID Mixture, double flowers, mixture of all colors70	1.10	3.95
16 Fosteriana T. WHITE EMPEROR , white	1.75	3.35	12.50	37 MUSCARI ARMENIACUM (Grape Hyacinths), clear blue60	1.10	3.95
17 Fosteriana T. RED EMPEROR , bright vermilion-scarlet	1.75	3.35	12.50	38 ERANTHIS (Winter Aconite), golden yellow60	1.10	3.95
18 Daffodil UNSURPASSABLE , golden yellow throughout	2.60	4.75	16.95	39 Iris WHITE EXCELSIOR , pure white90	1.65	5.95
19 Daffodil PRESIDENT LEBRUN , deep yellow trumpet, pure white perianth ...	2.60	4.75	16.95	40 Iris PROFESSOR BLAAUW , deep velvety blue90	1.65	5.95
20 Daffodil MOUNT HOOD , ivory white perianth, creamy-white trumpet	2.60	4.75	16.95	41 SCILLA SIBERICA SPRING BEAUTY , delphinium blue75	1.40	5.10
21 Daffodil KING ALFRED , golden yellow	2.60	4.75	16.95	42 Botanical T. RED EMPEROR , bright vermilion-scarlet	1.75	3.35	12.50
22 Narcissus DELIBES , bright yellow perianth, large deep orange cup	2.60	4.75	16.95	Narcissus DUKE OF WINDSOR , white perianth, orange-red flat cup	2.60	4.75	16.95
23 Narcissus ICE FOLLIES , pure white perianth, flat apricot-yellow cup	2.60	4.75	16.95	Hyacinth PERLE BRILLIANT , fine light blue	3.20	5.80	20.70
24 Narcissus DUKE OF WINDSOR , white perianth, orange-red flat cup	2.60	4.75	16.95	MUSCARI ARMENIACUM (Grape Hyacinths), clear blue60	1.10	3.95
25 Narcissus POMONA , pure white perianth, sulphur-yellow cup with red margin and green center	2.00	3.65	12.95	43 Lily Flow. T. RED SHINE , deep red ...	1.50	2.75	9.75
26 Rockgarden Narc. PEEPING TOM , very long deep golden-yellow trumpet, reflexed petals	2.60	4.75	16.95	Poetaz Narc. CHEERFULNESS , white perianths, full double creamy-white center	1.85	3.35	11.95
27 Triandrus Narc. TRESAMBLE , four or more pure white flowers	2.15	3.90	14.25	44 Peony Flow. T. EROS , clear old rose ...	1.50	2.75	9.75
28 Double Narc. GOLDEN DUCAT , full double, pure white flower	2.60	4.75	16.95	MUSCARI ARMENIACUM (Grape Hyacinths), clear blue60	1.10	3.95
29 Poetaz Narc. GERANIUM , pure white perianths, orange-scarlet cups.	2.60	4.75	16.95	45 Botanical T. GOLDEN EAGLE , deep golden yellow, exterior apricot	1.75	3.35	12.50
				Rockgarden Narc. FEBRUARY GOLD , golden yellow miniature trumpet, reflexing petals	2.25	3.95	14.95





National Agricultural Library
RECEIVED
SEP 24 1968 ★
U. S. Department of Agriculture

Beautify America with **HOLLAND** *flowerbulbs*



This catalog is a tour through our flowerbulb wonderland. More than that, it is your introduction to Holland, the country which, among other things, is famous for its fine flowerbulbs. Holland, one half the size of Texas, has a population approaching twelve million people. It is divided into eleven provinces; on the next eleven pages you will obtain an insight as to the individual characteristics of each province.

Province of GRONINGEN

Shortly following World War II an immense natural gas field was discovered here. It is large enough to supply all the Common-Market countries for at least the next 100 years.



FRONTPAGE 15 Botanical Tulips Red Emperor +
10 Daffodils King Alfred +
5 Hyacinths Delft's Blue

②

DARWIN TYPE TULIPS 2 Balalaika
3 Halcro
4 Smiling Queen
5 Etoile du Midi



③



④



⑤



Province of FRIESLAND

This province is particularly known for its many lakes, and consequently for watersports. To many people it is better known for world famous pedigree cattle.



6

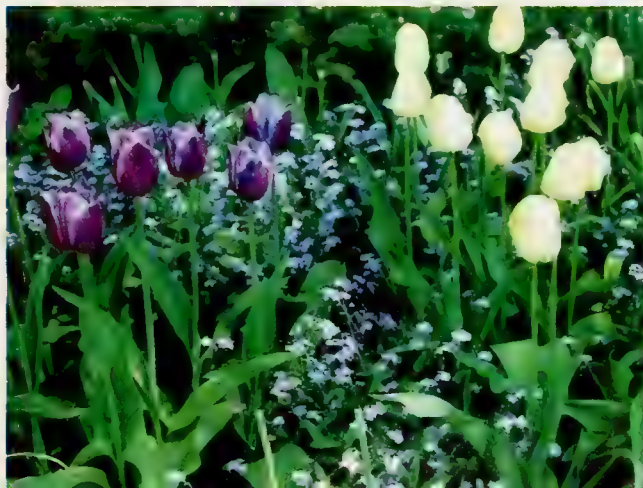


7

8



9



DARWIN TYPE TULIPS

6 Golden Niphetos

7 Snowpeak

8 Prince Carnival (red and yellow), Scarlett O'Hara (red), Border Beauty (pink and white)

9 Cum Laude (blue), Maureen (white)

Order Sheet - STAR ROSES - Fall Season - 1968

WYATT-QUARLES SEED COMPANY - BOX 2131 - RALEIGH, N. C. 27602

Name _____ Box or Street _____

Post Office _____ State _____ Zip _____

Orders accepted subject to stock unsold. Prices are for dormant roses. Fall Season 1968, 2-year, field-grown, guaranteed to bloom. The quantity prices, given for each rose, apply ONLY on orders for three or more plants of one variety to be shipped at one time to one address. Special Offers also sent to only one address. We cannot make changes in offers. Add 50¢ handling charge if rose order is less than \$10.00 and 3% Sales Tax.

NOTE: If a plant you order is already sold out, we will select for you a similar variety of equal or greater value, if such is available. If you do not wish this service, mark X here: _____. However, we do reserve the right to substitute for sold out varieties in special offers, regardless. ROSES WILL BE SENT AT PROPER PLANTING TIME FOR YOUR LOCALITY.

Quan.	HYBRID TEAS & GRANDIFLORAS	Each	3 for	Total
_____	Americana..Red (New)	3.50	9.30	_____
_____	American Heritage..Multi-color	3.75	9.90	_____
_____	Arlene Francis..Yellow (New)	3.50	9.30	_____
_____	Betty Uprichard..Pearl Pink	2.00	5.25	_____
_____	Big Red..Red	3.50	9.30	_____
_____	Blanche Mallerin..White	2.25	6.00	_____
_____	Camelot..Coral Pink	3.25	9.00	_____
_____	Charlotte Armstrong..Rose-Red	2.25	6.00	_____
_____	Chicago Peace..Pink with Yellow	3.25	9.00	_____
_____	Christian Dior..Crimson Red	3.00	7.95	_____
_____	Christopher Stone..Scarlet-Crimson	2.00	5.25	_____
_____	Chrysler Imperial..Crimson	3.00	7.95	_____
_____	Colorama..Red-Yellow (New)	3.50	9.30	_____
_____	Comanche..Bright Scarlet (New)	3.75	9.90	_____
_____	Crimson Glory..Deep Crimson	2.00	5.25	_____
_____	Eclipse..Golden Yellow	2.25	6.00	_____
_____	Golden Girl..Yellow	3.00	7.95	_____
_____	Golden Prince..Yellow	3.50	9.30	_____

RECEIVED
 SEP 24 1968
 U. S. Department of Agriculture

HYBRID TEAS & GRANDIFLORAS (continued)

<u>Quan.</u>		<u>Each</u>	<u>3 for</u>	<u>Total</u>
_____	Granada..Red & Yellow	3.50	9.30	_____
_____	Helen Traubel..Apricot	3.50	9.30	_____
_____	Invitation..Salmon-Orange	2.50	6.60	_____
_____	John S. Armstrong..Velvety-Red	3.50	9.30	_____
_____	John F. Kennedy..Large White	4.00	10.65	_____
_____	King's Ransom..Rich Yellow	3.75	9.90	_____
_____	Lady Elgin..Orange-Apricot	2.75	7.20	_____
_____	Lady X..Lavender-Pink	3.50	9.30	_____
_____	Lowell Thomas..Rich Yellow	2.25	6.00	_____
_____	Lucky Lady..Pink Bicolor	4.00	10.65	_____
_____	Mme. Cochet-Cochet..Coppery Pink	2.25	6.00	_____
_____	Mirandy..Deep Crimson	2.25	6.00	_____
_____	Miss All-American Beauty..Pink	3.75	9.90	_____
_____	Mister Lincoln..Velvety-Red	3.50	9.30	_____
_____	Mojave..Orange Blend	3.00	7.95	_____
_____	Montezuma..Rosy Salmon	3.00	7.95	_____
_____	Mount Shasta..White	3.00	7.95	_____
_____	Mrs. P.S. duPont..Golden Yellow	2.00	5.25	_____
_____	New Yorker..Brilliant Red	2.25	6.00	_____
_____	Oklahoma..Dark Red	3.00	7.95	_____
_____	Orange Flame..Orange-Scarlet	2.75	7.20	_____
_____	Pascali..Creamy White (New)	4.25	11.55	_____
_____	Peace..Yellow-Pink Edge	2.00	5.25	_____
_____	Pink Peace..Deep Pink	3.00	7.95	_____
_____	Polynesian Sunset..Coral-Orange	3.75	9.90 (new)	_____
_____	President Eisenhower..Bright Red	2.75	7.20	_____
_____	Queen Elizabeth..Pink	3.00	7.95	_____
_____	Royal Highness..Pastel Pink	3.25	9.00	_____
_____	Scarlet Knight..Red	3.75	9.90	_____
_____	Summer Sunshine..Yellow	3.75	9.90	_____
_____	Swarthmore..Rose-Red	3.00	7.95	_____
_____	Tiffany..Pink	3.25	9.00	_____
_____	Tropicana..Orange-Red	3.75	9.90	_____
_____	White Knight..Pure White	2.75	7.20	_____
	<u>FLORIBUNDA ROSES</u>			
_____	Angel Face..Lavender (New)	3.50	9.30	_____
_____	Europeana..Red Satin	3.00	7.95	_____

FLORIBUNDA ROSES (continued)

<u>Quan.</u>		<u>Each</u>	<u>3 for</u>	<u>Total</u>
_____	Garnette..Dark Red (New)	2.25	6.00	_____
_____	Gene Boerner..Pink (New)	3.50	9.30	_____
_____	Girl Scout..Golden Yellow (New)	2.50	6.60	_____
_____	Goldilocks..Sunny Yellow (New)	2.25	6.00	_____
_____	Lavender Girl..Lavender	2.75	7.20	_____
_____	Margo Koster..Salmon (New)	2.25	6.00	_____
_____	Red Pinocchio..Carmine (New)	2.25	6.00	_____
_____	Snow Fairy..White	2.50	6.60	_____
_____	Spartan..Coral	2.75	7.20	_____
_____	Sunspot..Bright Yellow	2.50	6.60	_____

CLIMBING ROSES

_____	Blaze..Scarlet-Crimson	2.25	6.00	_____
_____	Blossomtime..Two-Toned Pink	2.75	7.20	_____
_____	Cl. Crimson Glory..Crimson	2.50	6.60	_____
_____	Climbing Peace..Same as Peace	2.50	6.60	_____
_____	Coralita..Deep Red (New)	3.50	9.30	_____
_____	Golden Showers..Daffodil Yellow	3.00	7.95	_____
_____	New Dawn..Flesh-Pink	2.25	6.00	_____
_____	Rhonda..Pink (New)	3.50	9.30	_____
_____	White Dawn..White	2.25	6.00	_____

MISCELLANEOUS ROSE

_____	The Fairy..Sea-Shell Pink	2.25	6.00	_____
-------	---------------------------	------	------	-------

SPECIAL ROSE OFFERS

Offer No. 3 (4 for \$12.95)(Angel Face, Comanche,
Gene Boerner, Pascali)(All New) _____

Offer No.20 (6 for \$11.45)(Blanche Mallerin, Crimson
Glory, Mirandy, Peace, Picture, Sutter's Gold) _____

Sub-Total _____

3% Sales Tax _____

50¢ Handling Charge (if rose order is less than \$10.00) _____

TOTAL _____

(Send payment before shipment. No C.O.D. Orders)
This is a partial list. Other varieties of STAR BRAND ROSES ARE
available. Your inquiry on unlisted varieties is welcome.

FLOWER SEED FOR FALL SOWING

DOUBLE HOLLYHOCK

1681 Newport Pink; 1682 Scarlet-Bright Red; 1683 Yellow;
1684 Salmon Rose; 1685 Maroon-Very Dark Red; 1686 White;
1690 Mixture of Double Hollyhocks

All varieties: Pkt. 25¢; 1/8 oz. 70¢; 1/4 oz. \$1.10;
oz. \$3.30

LARKSPUR GIANT IMPERIALS

1714 White King; 1717 Carmine King; 1719 Lilac King;
1722 Blue Spire; 1724 Salmon Supreme; 1726 Blue Bell;
1720 Giant Imperial Mixed

Pkt. 20¢; 1/4 oz. 60¢; 1/2 oz. \$1.10; oz. \$1.75

LARKSPUR REGAL

1730 Regal Lilac; 1731 Regal Rose; 1732 Regal Dark Blue;
1733 Regal White; 1734 Regal Pink; 1735 Regal Mixed

Pkt. 20¢; 1/4 oz. 60¢; 1/2 oz. \$1.10; oz. \$1.75

PANSIES SWISS GIANT

1874 Alpenglöw (Red); 1876 Rheingold (Yellow); 1877 Lake
of Thun (Blue); 1878 White; 1879 Coronation Gold
(Golden Yellow)

Pkt. 45¢; 1/16 oz. \$1.05; 1/4 oz. \$3.40; oz. \$11.25

MIXED PANSIES

1880 Swiss Giant Mixed--Pkt. 40¢; 1/8 oz. \$1.50;
1/4 oz. \$2.75; oz. \$8.40

1860 Maple Leaf Mixed---Pkt. 40¢; 1/16 oz. \$1.00;
1/4 oz. \$3.30; oz. \$10.80

1869 Super Giant Mixed--Pkt. 50¢; 1/16 oz. \$1.70;
1/8 oz. \$3.10; 1/4 oz. \$5.60

VEGETABLE SEED FOR FALL PLANTING

CABBAGE

151 Early Jersey Wakefield; 152 Charleston Wakefield;
153 Late Flat Dutch; 166 Ferry's Round Dutch

Pkt. 20¢; 1/2 oz. 30¢; oz. 50¢

MUSTARD

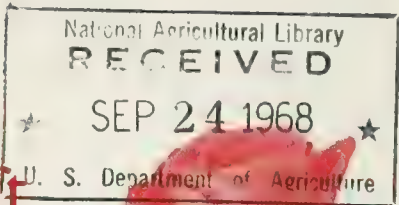
484 Broadleaf; 485 Southern Giant Curled; 486 Old Fashion;
488 Tendergreen or Mustard Spinach

Pkt. 20¢; oz. 30¢

TURNIPS

773 Mixed; 776 Amber Globe (Yellow); 778 Cowhorn; 780 White
Norfolk; 781 Purple Top White Globe; 783 Seven Top

Pkt. 15¢; oz. 25¢; 1/4 lb. 45¢; lb. \$1.00



STAR ROSES

Christmas Gift Order Form



Date

WYATT-QUARLES SEED COMPANY

Box 2131

RALEIGH, N. C. 27602

Please send the following Christmas Gift items to the names below. And *be sure to send* the REAL LIVING ROSEBUD IN A VIAL OF WATER – before Christmas – to each person on my Star Roses Gift List. Orders must be received by December 8th in order for Bud to be sent to recipient. My check or money order is enclosed for \$.....

(Please write or print all names and addresses plainly.)

NOTE: All group offer "3 or more" prices apply only when those roses are shipped together to the same address. You may order any special offer or individual item listed on our ~~426-87~~ Rose Order Sheet. (Add 3% N. C. Sales Tax)

YOUR NAME

ADDRESS

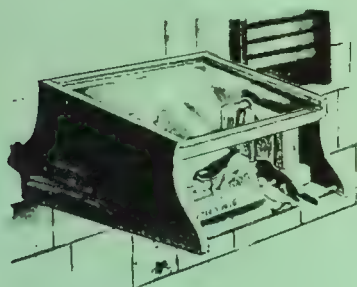
CITY.....**STATE**.....**ZIP**
CODE.....

SEND THE FOLLOWING:

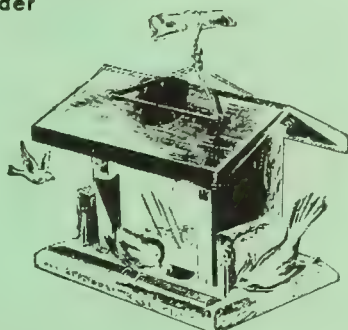
	Catalog Number	Quantity Wanted	NAMES OF BULBS OR OTHER ARTICLES WANTED	PRICE	
				Dollars	Cents
PLEASE DO NOT WRITE IN THIS SPACE					
			AMOUNT BROUGHT FORWARD		
				Don't forget the 50¢ handling charge on ROSE orders for less than \$10.00. Sorry, no C.O.D. shipments. NOTE—Does Order Include Everything You Need? TOTAL	

BIRD FEEDERS—WILD BIRD FOOD

Write for Free Illustrated Folder



BIRD CAFE®
A glass top protects food and birds from rain and snow. Room for many "customers" at the seed tray or at either HYDE CAKE holder.



*W-16 8" x 16" x 16" Postpaid \$6.50

WYATT-QUARLES CAROLINA ADAPTED wild bird food. 5 lbs., \$1.50, postpaid.

SUNFLOWER SEED. Straight seed. Particularly for Cardinals. 2 lbs., \$1.05; 5 lbs., \$1.85, postpaid.

BH-52 BIRD'S FILLING STATION (Size 12" x 10" x 10"). An excellent automatic feeder that has two cake holders and capacity for 5 lbs. W-Q Wild Bird seed. Postpaid, \$5.50.

Give Star Roses
as

Christmas Gifts

"They Keep On Giving"



A Rosebud at Christmas
Announces Your Gift
of Plants to Come
Specify If Bud Desired

Orders must be received by December 8th in order for Bud to be sent to recipient.

Plants will be shipped next spring at the right time for planting, unless you request otherwise. Early orders can be sent in time for fall planting if you prefer.

In order to receive rose bud, order must be for spring shipment only.

SEND A GIFT CERTIFICATE FOR \$.....

TO:

ADDRESS

CITY..... STATE..... ZIP
CODE.....

Card To Read:

TO.....

FROM.....

SEND THE FOLLOWING:.....

.....

.....

SEND A GIFT CERTIFICATE FOR \$.....

TO:.....

ADDRESS

CITY..... STATE..... ZIP
CODE.....

Card To Read:

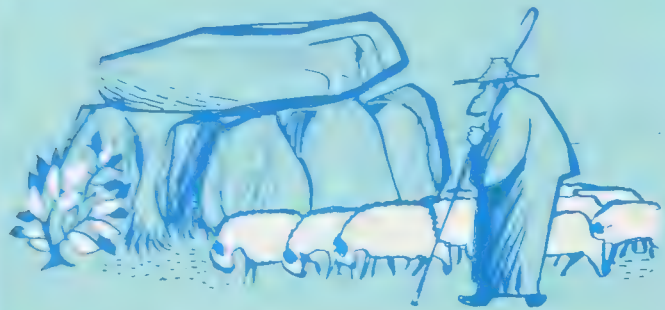
TO.....

FROM.....

WRITE ADDITIONAL ORDERS ON BACK

Every Star Rose is Guaranteed To Bloom

Province of DRENTE
For people who delight in delving into history, the province of Drente is a must. Here you can find ancient stone graves (called "hunnbed") dating from 2000 years B.C. Large sheep herds are not an uncommon sight in the area.



10



11



13



12

LILY-FLOWERING TULIPS
10 White Triumphator

BOUQUET-FLOWERING TULIPS
11 Orange Bouquet

DARWIN HYBRID TULIPS
12 General Eisenhower
13 Gudoshnik

Province of OVERIJSEL
Modern and large textile industries and historical villages go hand in hand in Overijssel. An interesting village is Giethoorn (Venice of Holland) where local traffic takes place by boats called "punters".



14



PEONY-FLOWERING TULIPS

14 Brilliant Fire

PARROT TULIPS

15 Blue Parrot (blue), Red Parrot (red), Van Dijk (pink), Texas Gold (yellow), Orange Parrot (orange)

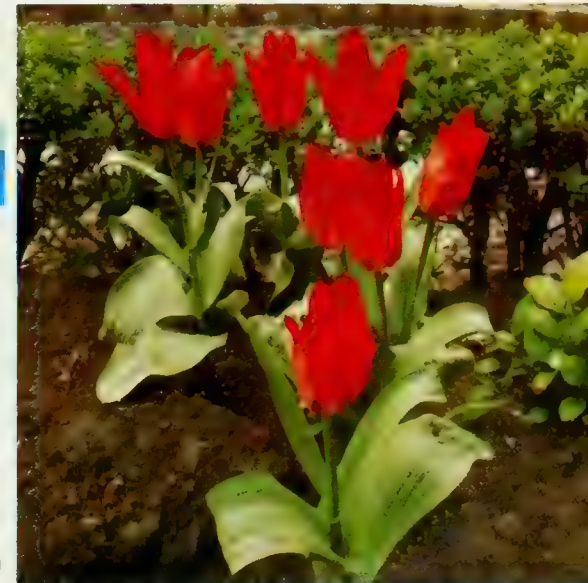


15

16



17



BOTANICAL TULIPS

16 White Emperor

17 Red Emperor



18



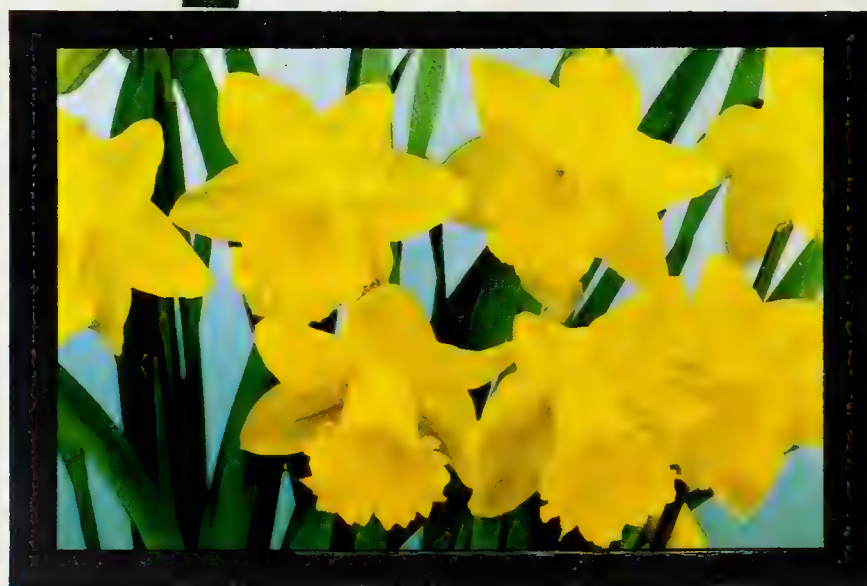
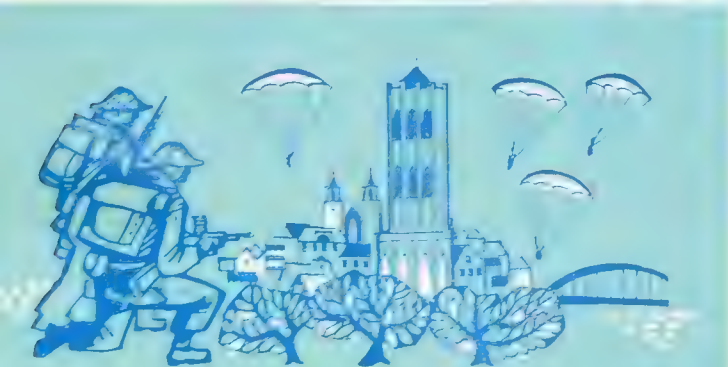
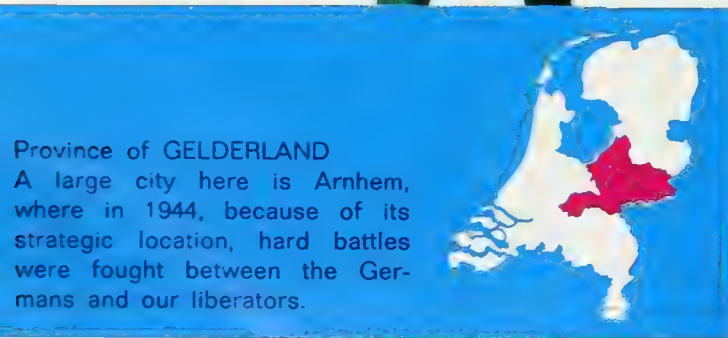
19



20

DAFFODILS

18 Unsurpassable 20 Mount Hood
19 President Lebrun 21 King Alfred



21



22

24

**LARGE CUPPED
NARCISSI**

- 22 Delibes
- 23 Ice Follies
- 24 Duke of Windsor
- 25 Pomona



25



23

Province of UTRECHT

Located in the heart of Holland. It is the site of the Palace Soestdijk, built in 1674, and presently the home of our Royal Family, Queen Juliana and Prince Bernhard.





26

ROCK GARDEN NARCISSI

DOUBLE NARCISSI
POETAZ NARCISSI



27

26 Peeping Tom
27 Tresamble

28 Golden Ducat
29 Geranium



28

Province of NOORD-HOLLAND
Here you'll find Amsterdam, capital of Holland, well known for its canals, 17th. century houses, museums, street organs and diamond cutting industry. Nearby is Schiphol, Europe's most modern airport and gateway to the continent.



29





30



31

HYACINTHS

- 30 Crownprincess Margaretha
- 31 Jan Bos (red), City of Haarlem (yellow), Carnegie (white), Delft's Blue (blue), Pink Pearl (pink)



32

CROCUS

- 32 Yellow Mammouth (yellow), Early Perfection (blue), Peter Pan (white), Pickwick (striped)
- 33 Hybrid Amaryllis Scarlet

33



Province of ZUID-HOLLAND
 One of the most dynamic parts of Holland with 's-Gravenhage (The Hague) being the center of national government, with Rotterdam, the world's first harbor, and last but not least the colorful bulbfields.



Province of ZEELAND
Province of islands, ever and
again fighting against the sea
and floods. The huge Delta plan
will close the outlets to the sea
for protection and will gain new
fertile land. Its device: „I wrestle
and rise”.



- 34 Galanthus (Snowdrops)
- 35 Anemone the Caen
Mixture
- 36 Anemone St. Brigid
Mixture
- 37 Muscari Armeniacum
(Grape Hyacinths)



(34)

(35)



(36)



(37)





Province of NOORD-BRABANT
Besides its natural beauty and
smaller industries, in Eindhoven
you'll find the Philips factories,
manufacturers of world famous
electrical and electronic equip-
ment



38

39



38 Eranthis (Winter Aconite)
39 Iris White Excelsior
40 Iris Professor Blaauw
41 Scilla Siberica Spring
Beauty

40

41

Province of LIMBURG

The rolling landscape and coal-mines are characteristic of this the eleventh province. Due to the keen competition from natural gas (Groningen) an important development has been found in the chemical "food from coal" industry.



(42)

ASSORTMENT 42

- 10 Botanical Tulips Red Emperor +
- 5 Large Cupped Narcissi Duke of Windsor +
- 5 Hyacinths Perle Brilliant +
- 10 Grape Hyacinths



(43)

43 ASSORTMENT

- 10 Lily-flowering Tulips Red Shine +
- 20 Poetaz Narcissi Cheerfulness



THANK YOU
for being with us



COME BACK AGAIN

(44)

ASSORTMENT 44

- 10 Peony Tulips Eros +
- 20 Grape Hyacinths



(45)

45 ASSORTMENT

- 10 Botanical Tulips Golden Eagle +
- 20 Rock Garden Narcissi February Gold

